

Dakota County Real Estate Inquiry

Data Updated 9/2/2011.

New [Try Our New Property Information Program](#)

[Need Help?](#) [What's New?](#)

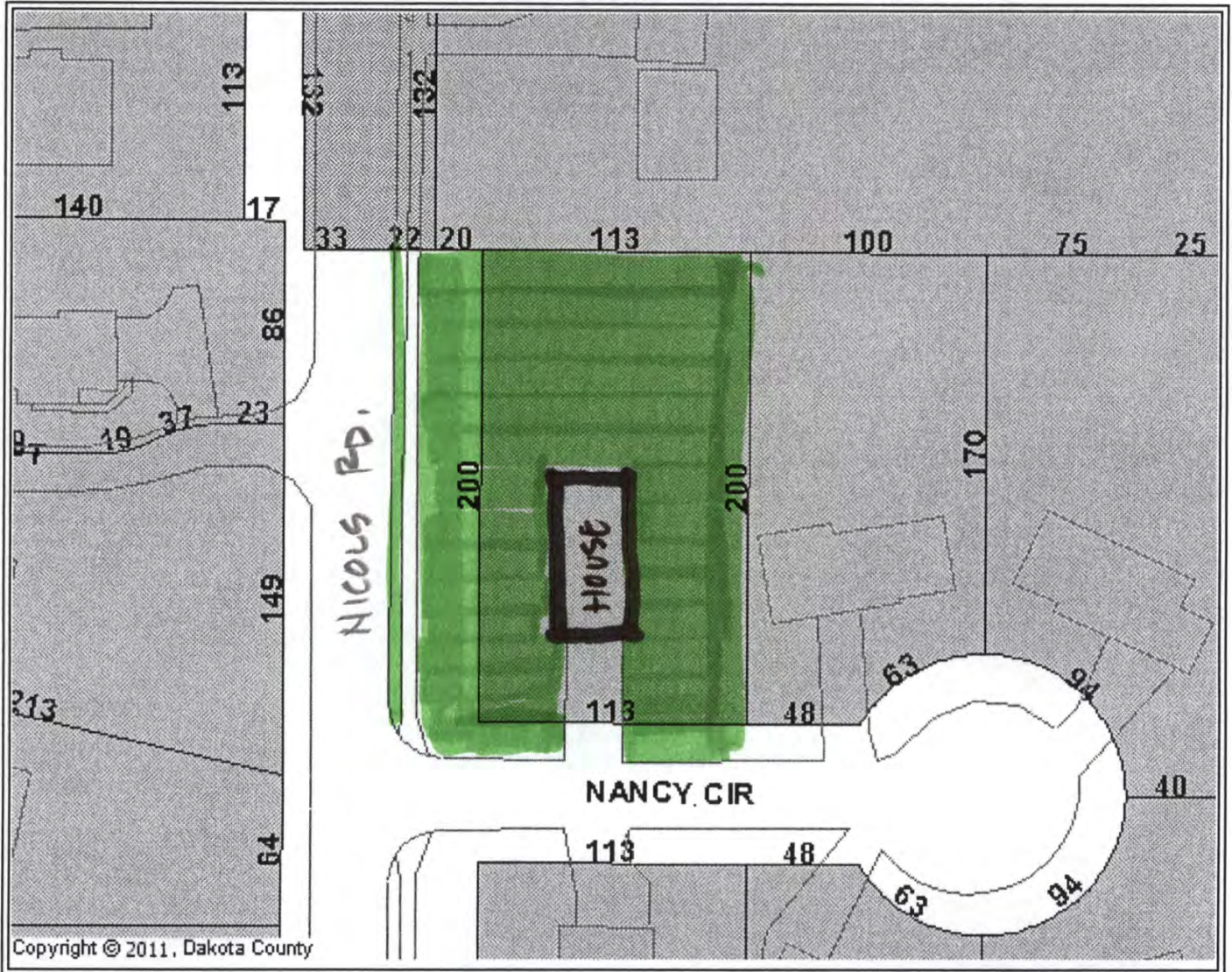
Map navigation

Select option and click on map:

Zoom In Zoom Out Pan Identify

Show Full County Map

Small Map



PLEASE READ [DISCLAIMER](#)

This application was developed by the Dakota County Office of GIS in cooperation with [Assessing Services](#) and the [Property Taxation & Records](#) Departments

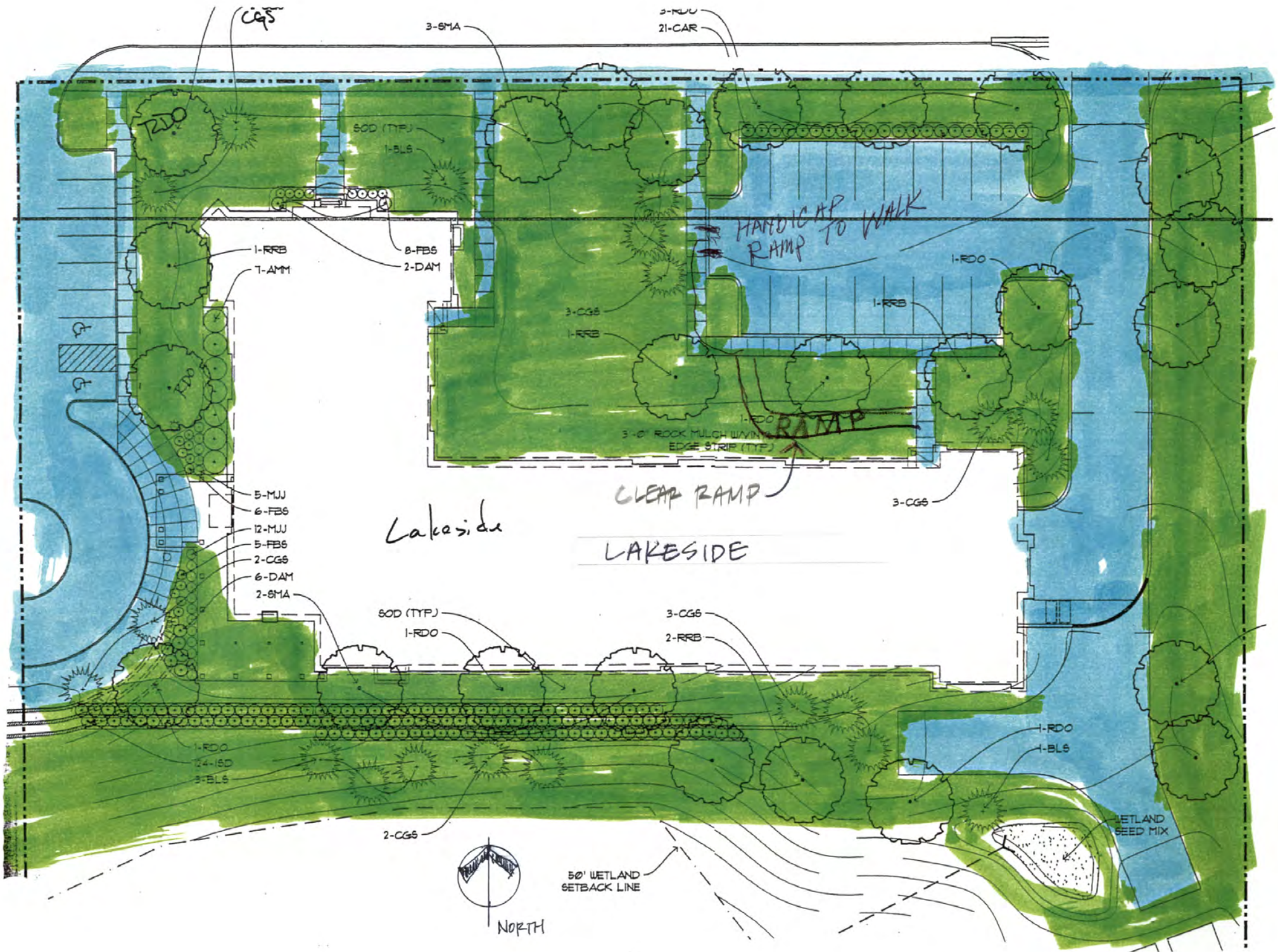


Click on the Dakota County Logo above to return to the home page

PUBLIC HOUSING

4680 NICOLS RD.

EBAN, MN



CGS

3-SMA

3-MU
21-CAR

T200

SOD (TYP.)
1-BLS

HANDICAP
RAMP TO WALK

1-RRB
7-AMM

8-FBS
2-DAM

1-RDO

F

F20

3-0" ROCK MULCH W/ WYIN
EDGE STRIP (TYP.)

RAMP

CLEAR RAMP

3-CGS

Lakeside

LAKESIDE

5-MU
6-FBS
12-MU
5-FBS
2-CGS
6-DAM
2-SMA

SOD (TYP.)
1-RDO

3-CGS
2-RRB

1-RDO
24-18D
3-BLS

2-CGS

1-RDO
1-BLS

WETLAND
SEED MIX



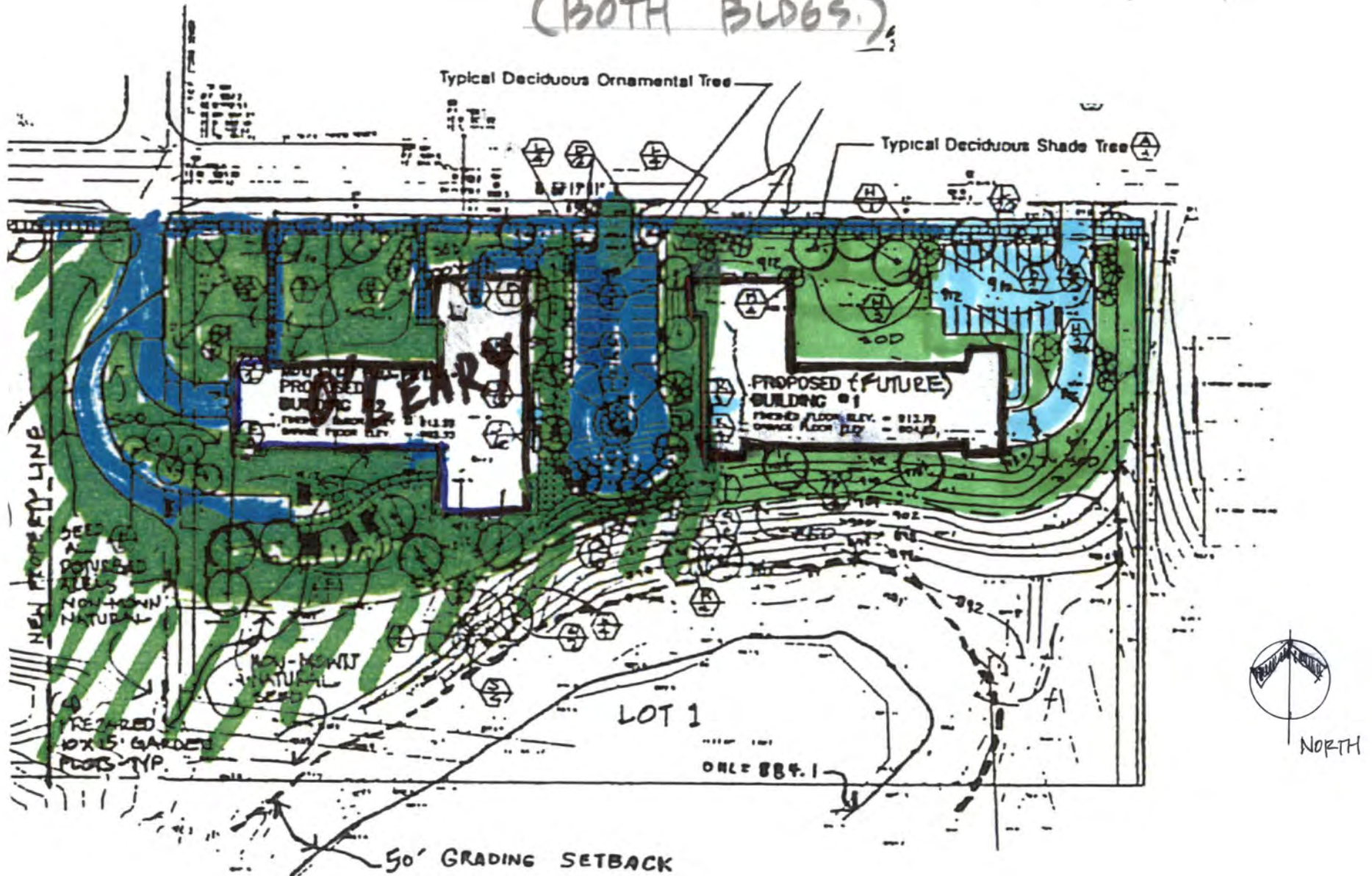
NORTH

50' WETLAND
SETBACK LINE

O'LEARY

LAKESIDE POINT

SNOW REMOVAL & ENTRY WALK
(BOTH BLDGS.)



LINCOLN PLACE
1997 GOLD TRAIL
EAGAN, MN



PILOT KHOB



PUBLIC HOUSING
1361 & 1363 EASTER LN.
EAGAN, MN



WEST FACING STAIRS
TO BE CLEARED (TYP.)
3 THIS.

"NO PARKING,
FIRE LANE" SIGN,
EVERY 100', TYP

STOP SIGN

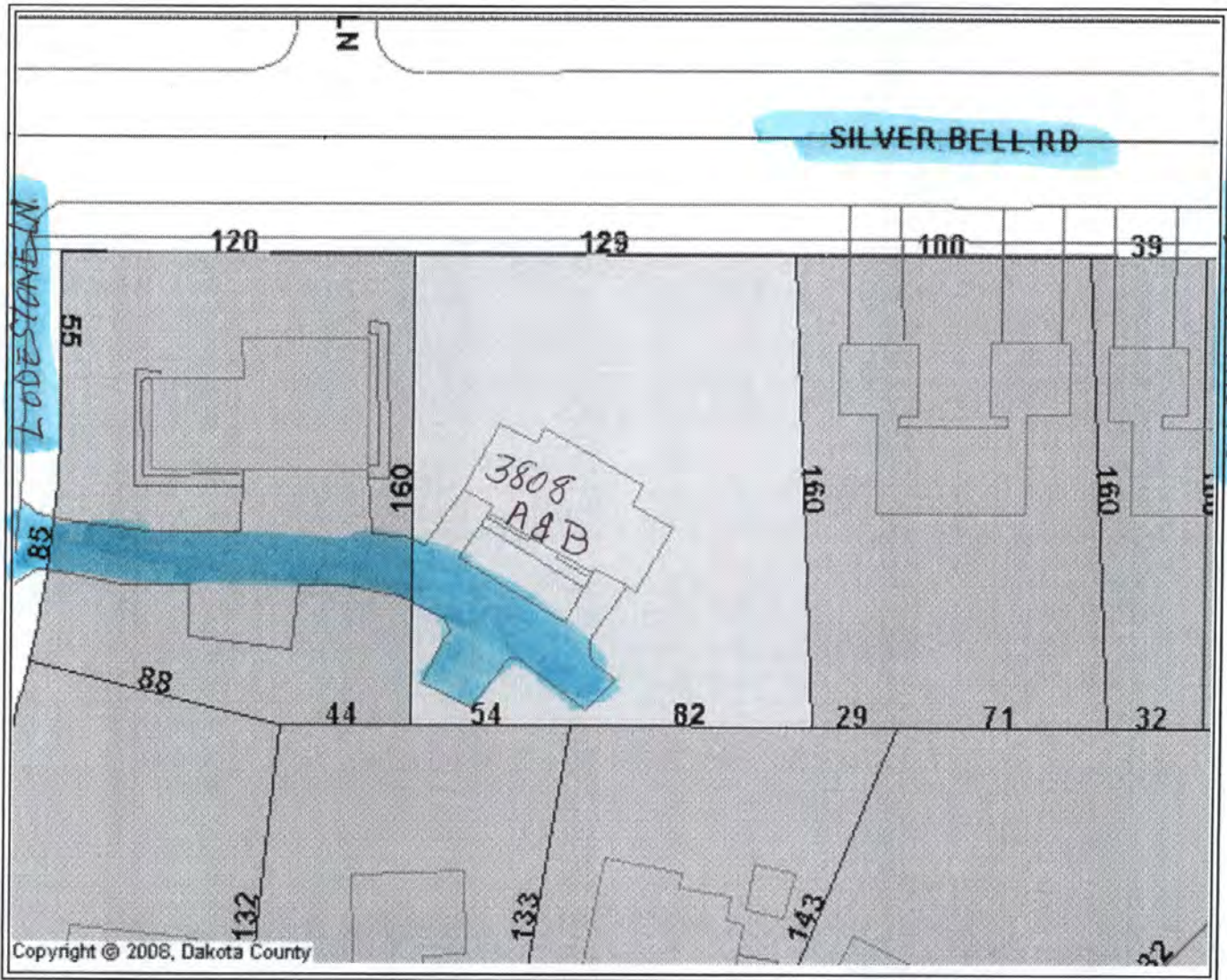
MAILBOX,
SEE RR 0.10
MONUMENT,
SIGN, SEE RR 0.10

CLEAR WALKS TO THE
FRONT STOOP (TYP.)

EAST FACING STAIRS
NOT TO BE CLEARED.
2 THIS

8.29.2014
RIVERVIEW RIDGE
3160 - 3214 RIVERVIEW
EAGAN, MN





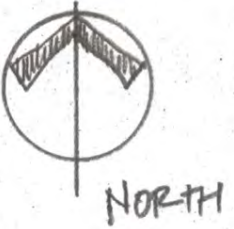
PIN: 10-16712-031-01 Owner: DAKOTA COUNTY CDA Address: 3808 LODESTONE LN City: EAGAN, MN 55122	2008 Est. Value (Payable 2009): 2007 Taxable Value (Payable 2008): \$0 Payable 2008 Tax: \$0.00 Total Acreage: 0.49 Year Built: 1976
---	--


3808 LODESTONE LN. 'A' & 'B'
 EAGAN, MN



CLEAR PRIVATE ROAD & OVERFLOW PARKING

8.12.14
NORTHWOODS
OAK & MAPLE ST.
EAGAN, MN



LEGEND
 EXISTING SIGNIFICANT TREE TO BE PRESERVED

CLEAR SIDEWALK

NORTHWOOD PKWY.

(LEXINGTON AVENUE)

COUNTY STATE AID HIGHWAY NO. 43

OAKWOODS OF EAGAN
2065 PARK CENTER
EAGAN, MN

Follow tree
line



1

2

3

4

5

6

7

8

9

10

11

12

13

14

15

16

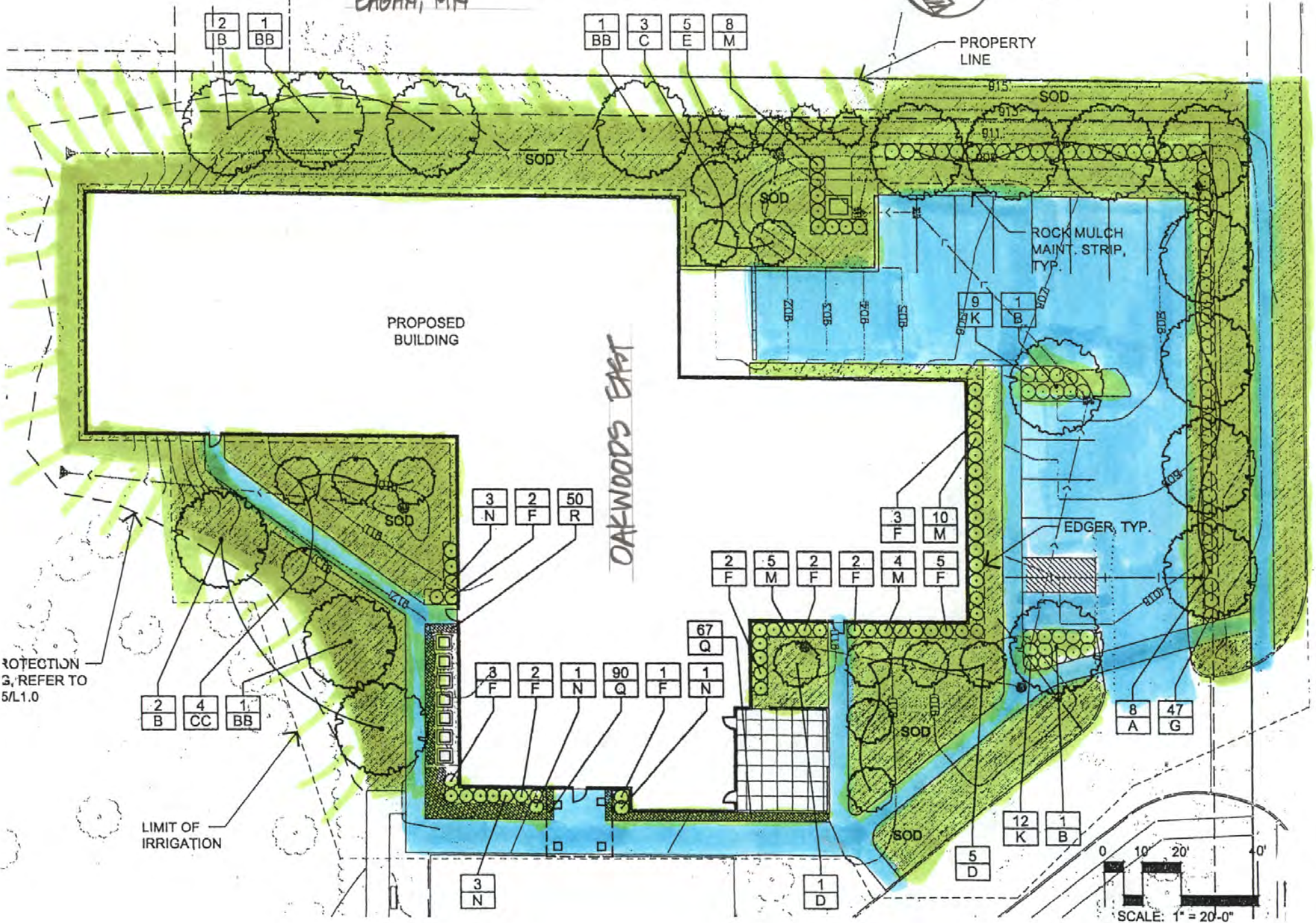
17

18

MOW & SNOW REMOVAL
TO CLIFF RD.



OAKWOODS EAST
2061 PARK CENTER DR.
EAGAN, MN



ROTECTION 3, REFER TO 5/L1.0

LIMIT OF IRRIGATION

PROPERTY LINE

PROPOSED BUILDING

OAKWOODS EAST

ROCK MULCH MAINT. STRIP, TYP.

EDGER, TYP.

SCALE: 1" = 20'-0"

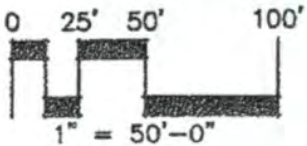
ERIN PLACE
4551 VILLA PARKWAY
EAGAN, MN



NORTH

State Highway No. 77 (Cedar Ave.) ↗
MnDot Right-of-way Plat No. 19-10 ↘

VILLA PARKWAY



SEE LEFT

LAKESHORE TOWNHOMES
NEAR JURDY RD &
HIGH SITE DR,
EAGAN, MN

JURDY RD?



TW 85.0
BW 85.0

TW 93.0
BW 87.0

TW 93.0
BW 93.0